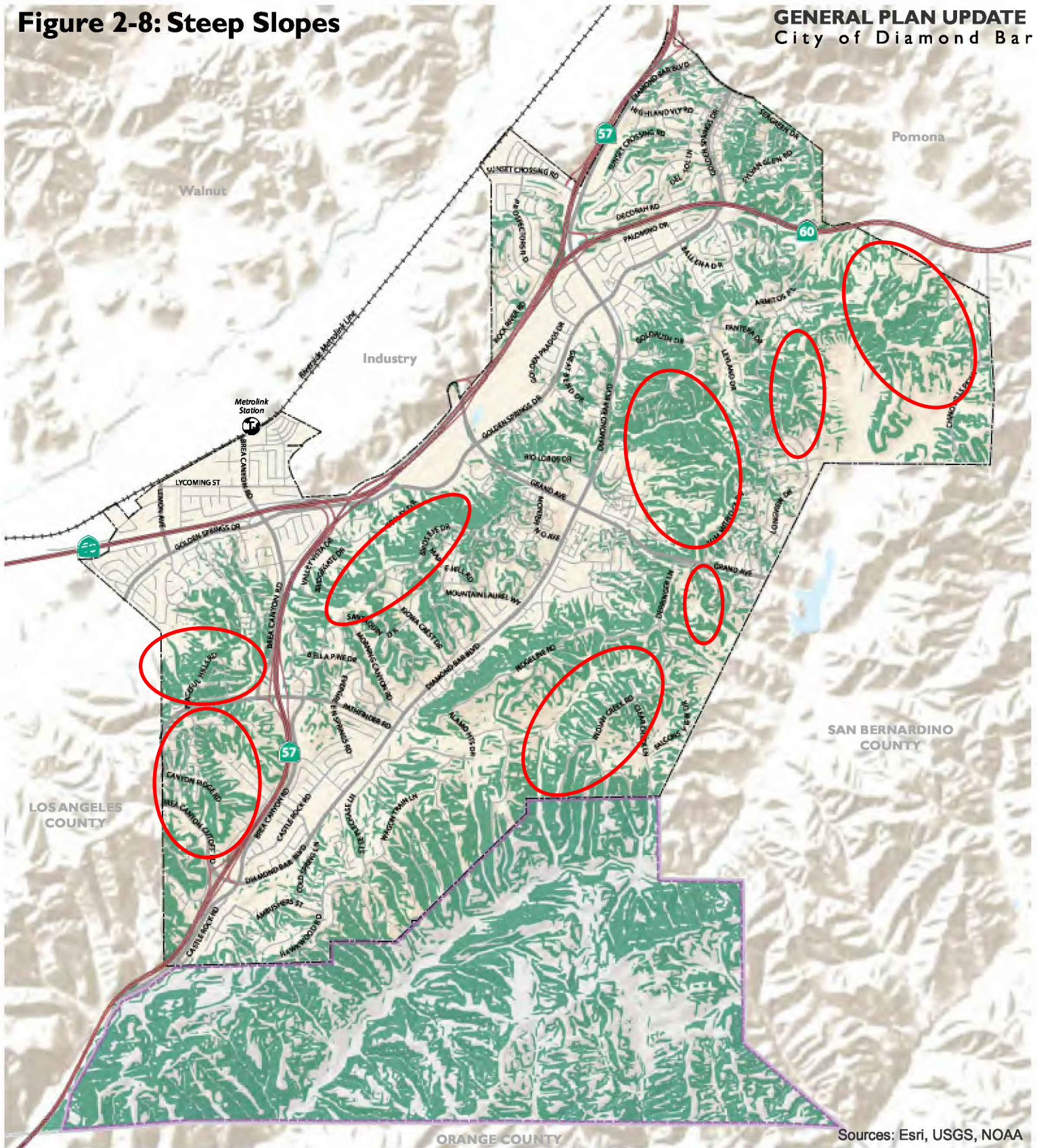


Figure 2-8: Steep Slopes



Sources: Esri, USGS, NOAA

- Slopes over 30 Percent
- Highways
- Ramps
- Major Roads
- Local Roads
- Railroads
- Water Features
- City of Diamond Bar
- Sphere of Influence
- County Boundary

Source: City of Diamond Bar, 2016; Los Angeles County GIS Data Portal, 2016; Natural Resources Conservation Service, USDA, 2016;

