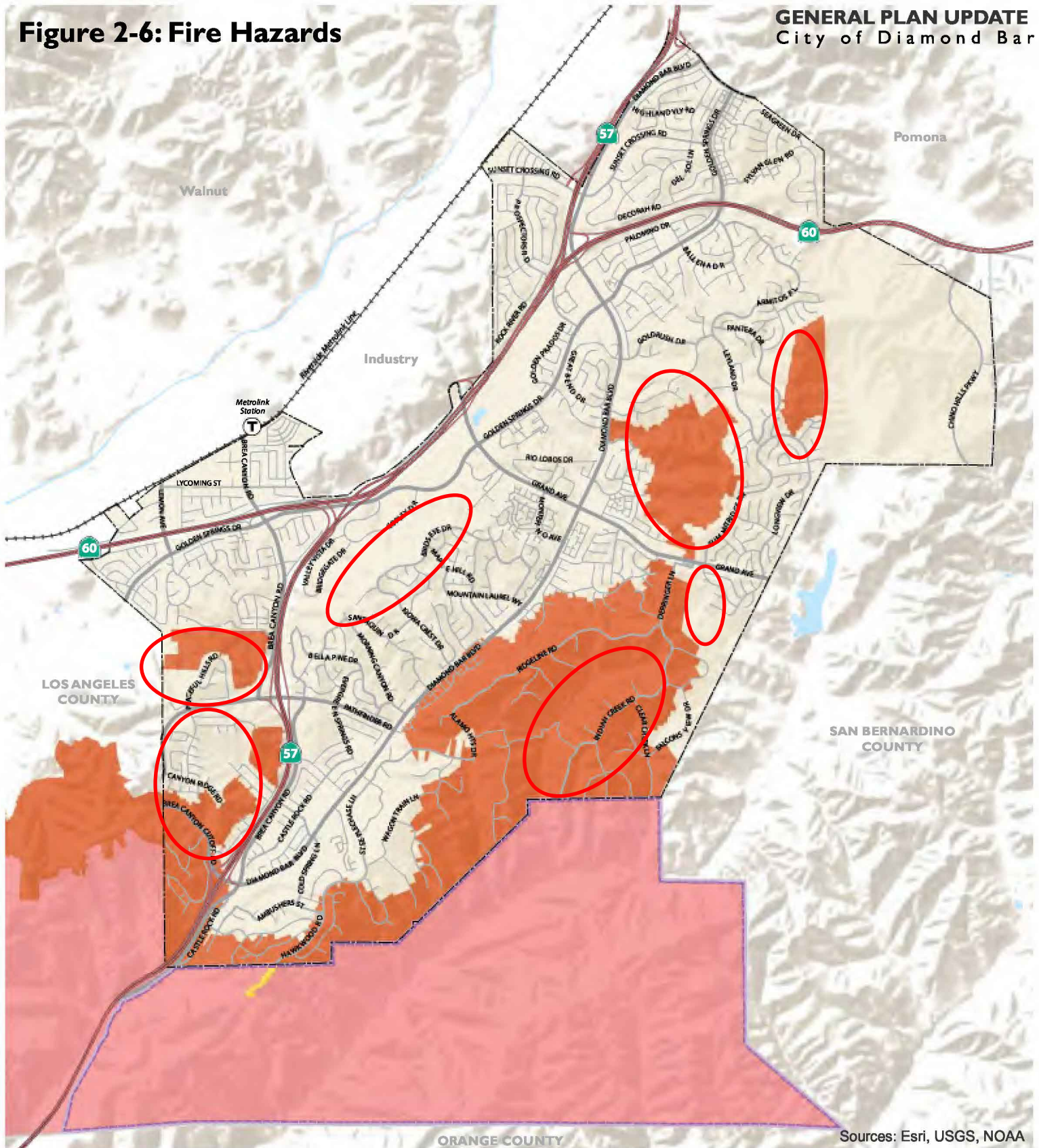


**Figure 2-6: Fire Hazards**



Sources: Esri, USGS, NOAA

**Fire Hazard Severity Zones**

- Local Responsibility Area (LRA)**
- Very High

**State Responsibility Area (SRA)**

- Very High
- High

- Highways
- Ramps
- Major Roads
- Local Roads
- Railroads
- Water Features
- City of Diamond Bar
- Sphere of Influence
- County Boundary

Source: California Department of Forestry and Fire Protection (CAL FIRE), 2007 & 2009; Los Angeles County GIS Data Portal, 2016; Dyett & Bhatia, 2016

